

Contrabass

# Sex and Death at Covent Garden

Charlie Barber

## 1. Intrada

**Lento**

♩ = 60

7 **A** *tranquillo*

15 **B**

24 **C**

33 **D**

43 **E**

52 **E** con sord.

57 **Rit.** **Attacca** mute out

*p* *cresc.* *p* *cresc.* *poco a poco* *mf* *p* *cresc.* *mf* *cresc.* *f* *dim.* *p*

## 2. Recitative + Aria

♩ = 116

**F** senza sord.

63 **F**

*f* *f* *p*

72 G

*f* *p* *p* *p* *p* *p* *p* *p*

80

*p* *p* *p* *p* *p* *p* *p* *p*

88 H

*f* *p* *p* *p* *p* *p* *p* *p*

96

*cresc.* *f*

102 I

*p* *f* *p* *p* *p* *p* *p*

109 J

*p* *p* *p* *p* *p* *p* *p*

116

*p* *p* *p* *p* *p* *p* *p*

123

*p*

Charlie Barber - Sex & Death at Covent Garden  
Contrabass

3

128 **K**

*f* *p* *mf*

135 **L**

*p* *mf* *f*

142 **2**

*mf* *cresc.* *f* *legato*

151 **M**

*p* *cresc.* *f* *p*

159 **2**

*f*

167 **N**

*mp* *p* *mf*

178 **O**

*p* *p* *f* *mp*

188 **P**

*p* *cresc.* *mf* *p*

10

## Contrabass

205 **Q**

*mp* *p* *cresc.*

212

*p* *cresc.*

219 **R**

*mf* *dim.* *p* *cresc.* *mf* *f*

226 **Attacca**

*dim.* *p*

**3. Allegro**

♩ = 132

233 **S**

*p* *cresc.* *f* *p* *f* *p* *cresc.* *f* *p*

239 **4** **7**

*f*

254 **5**

*f* *p* *f*

265 **T** pizz.

*p*

Contrabass

271



277



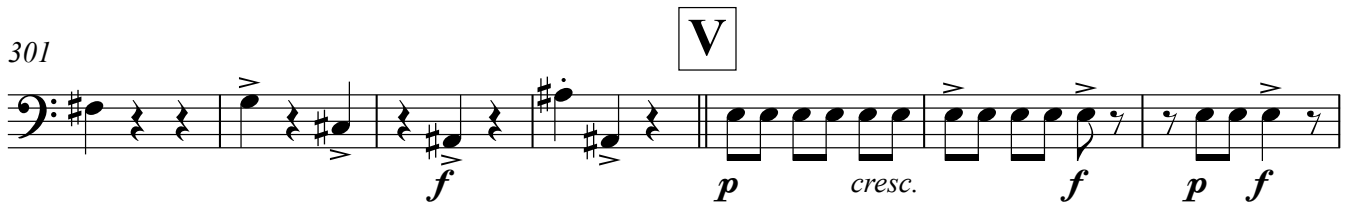
283



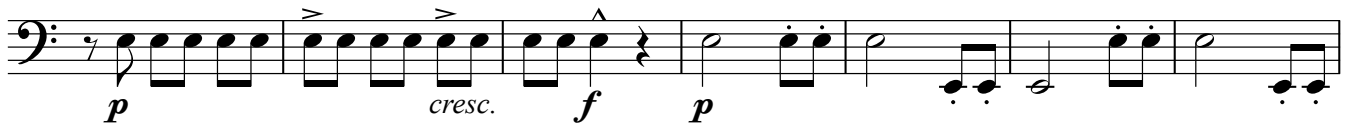
291



301



308



315



325



340



346



373



383



393



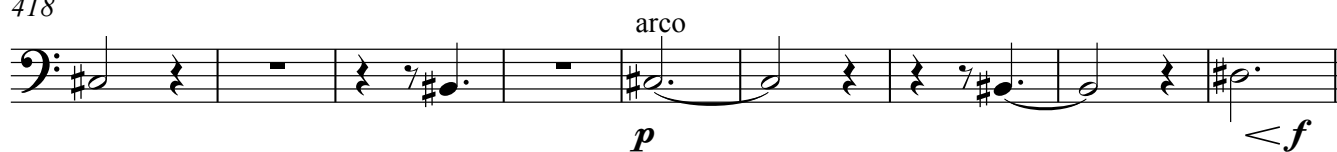
400



409



418



427



433



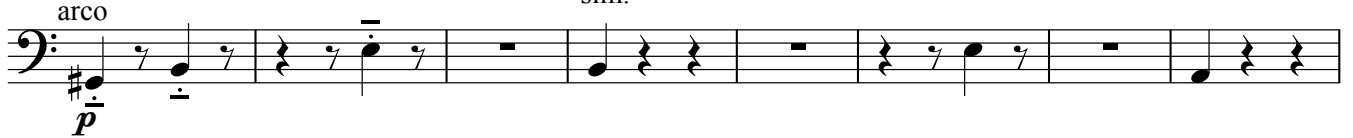
439



444



451 **BB**



459



467 **CC**



473



479



483

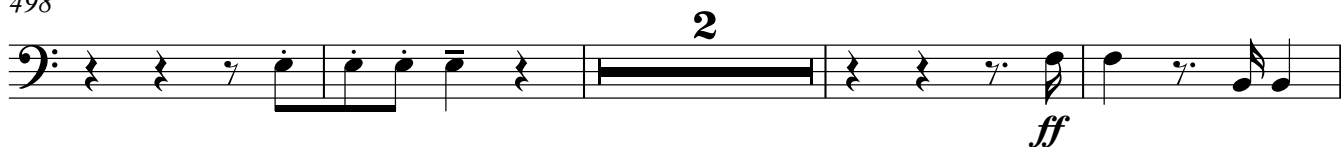


## Contrabass

490



498



504



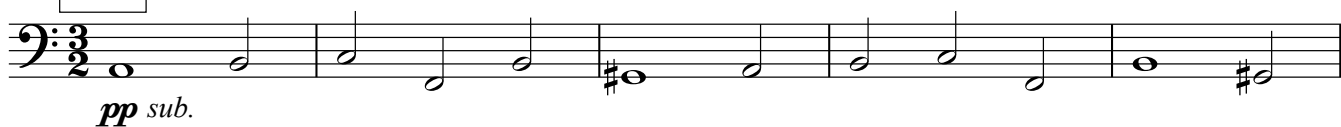
## 4. Cadenza

## Adagio

♩ = 60

509

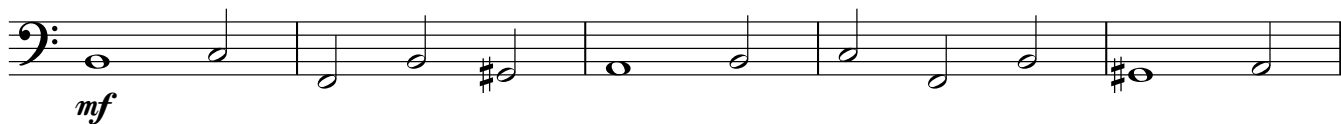
EE



514



519



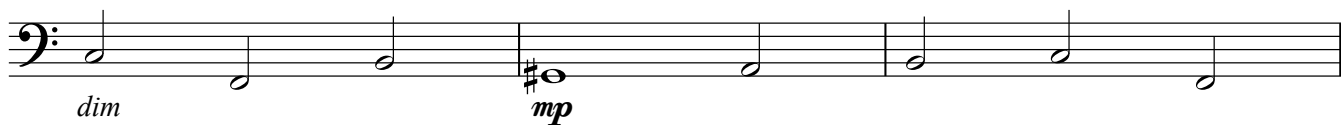
524



529



534



537

## Rall.

